

Fabric Product Details

PATTERN **Shindig**
COLOR **Sand Castle**

BRAND

Stroheim

APPLICATION

Fabric

USES

Upholstery

CATEGORIES

Bella - Dura, Outdoor, Easy To Clean, Wovens

BOOK

Color Indoor / Outdoor

COLORS

Grey, Beige, Linen

DESIGN TYPES

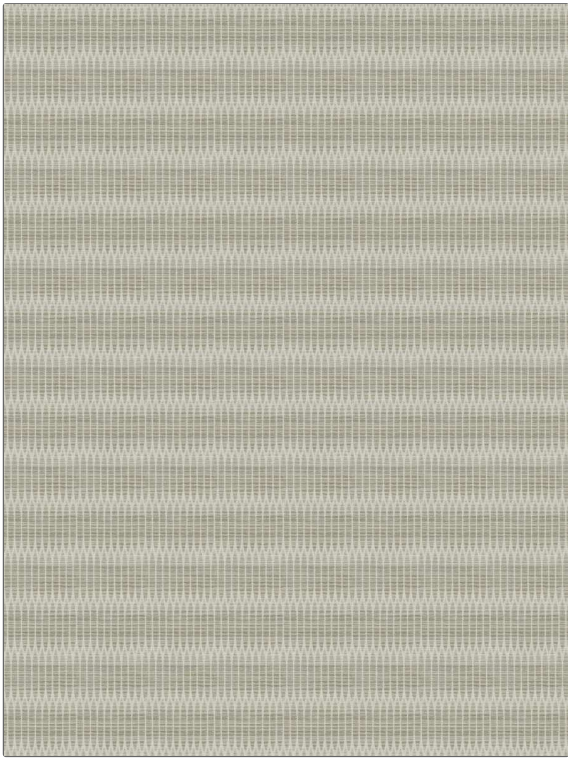
Global / Ethnic, Small Scale Woven, Contemporary / Modern, Abstract, Dots / Circles

SCALE

Small

DIRECTION SHOWN

Up the Bolt



WIDTH

54.00 in (137.16 cm)

FINISH

Water Resistant

VERTICAL REPEAT

4.75 in (12.06 cm)

HORIZONTAL REPEAT

0.38 in (0.97 cm)

CONTENT

94% High UV Polyester, 6% Polyolefin

BACKING

FIRE CODES

Does Not Contain FR Chemicals, UFAC Class I / NFPA 260

DOUBLE RUBS

Exceeds 100,000 Double Rubs (Wyzenbeek Method)

PRODUCT NUMBER

1387001

DATE BOOKED

05/2023

COUNTRY

USA

CLEANING CODES

WS, BLEACH CLEANABLE

ADDITIONAL PRODUCT NOTES

Water Resistant, Soil & Stain Repellent Finish, Pfas-Free, Bella Dura Home, Easy To Clean Finish, 1,000 Hours Light Fastness, Indoor / Outdoor, Ca Tb 117-2013, Bleach Cleanable, Exclusive Pattern