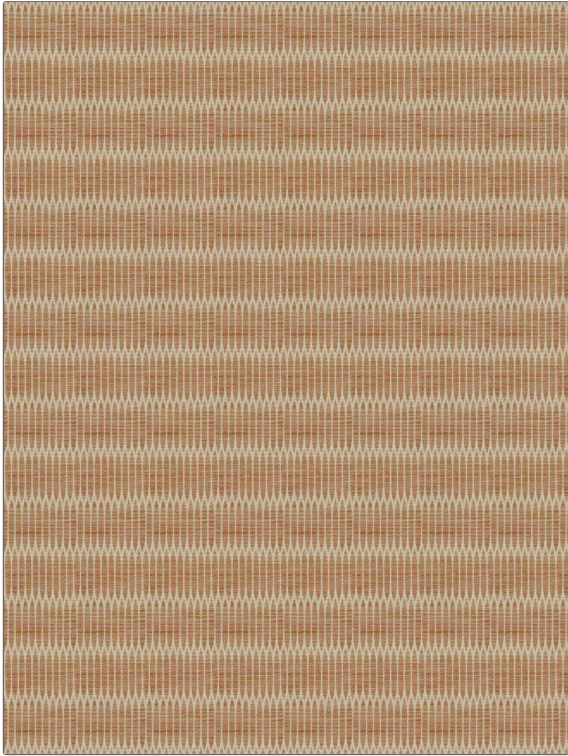


Fabric Product Details

PATTERN	Shindig
COLOR	Coral Punch
BRAND	APPLICATION
Stroheim	Fabric
USES	CATEGORIES
Upholstery	Bella - Dura, Outdoor, Easy To Clean, Wovens
BOOK	COLORS
Color Indoor / Outdoor	Orange / Spice, Coral / Peach
DESIGN TYPES	SCALE
Global / Ethnic, Small Scale Woven, Contemporary / Modern, Abstract, Dots / Circles	Small
DIRECTION SHOWN	
Up the Bolt	



WIDTH	FINISH	VERTICAL REPEAT	HORIZONTAL REPEAT
54.00 in (137.16 cm)	Water Resistant	4.75 in (12.06 cm)	0.38 in (0.97 cm)
CONTENT	BACKING	FIRE CODES	DOUBLE RUBS
94% High UV Polyester, 6% Polyolefin		Does Not Contain FR Chemicals, UFAC Class I / NFPA 260	Exceeds 100,000 Double Rubs (Wyzenbeek Method)
PRODUCT NUMBER	DATE BOOKED	COUNTRY	CLEANING CODES
1387003	05/2023	USA	WS, BLEACH CLEANABLE

ADDITIONAL PRODUCT NOTES
Water Resistant, Soil & Stain Repellent Finish, Pfas-Free, Bella Dura Home, Easy To Clean Finish, 1,000 Hours Light Fastness, Indoor / Outdoor, Ca Tb 117-2013, Bleach Cleanable, Exclusive Pattern