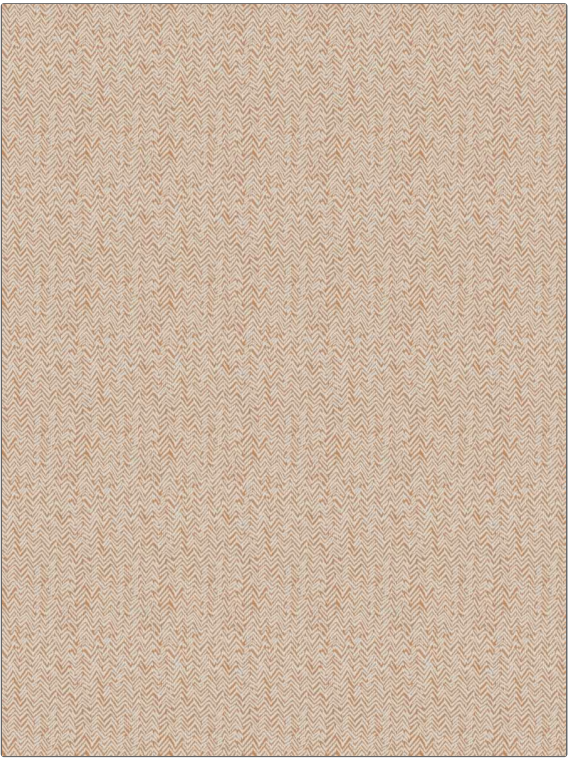


Fabric Product Details

PATTERN	Birdie
COLOR	105

BRAND	APPLICATION
Stroheim	Fabric
USES	CATEGORIES
Upholstery	Crypton Home, Easy To Clean, Wovens, Chenille
COLORS	DESIGN TYPES
Coral / Peach	Herringbone, Small Scale Woven, Chevron
SCALE	DIRECTION SHOWN
Small	Railroaded



WIDTH	FINISH	VERTICAL REPEAT	HORIZONTAL REPEAT
54.00 in (137.16 cm)	Crypton Home	3.80 in (9.65 cm)	3.40 in (8.64 cm)
CONTENT	BACKING	FIRE CODES	DOUBLE RUBS
68% Cotton, 32% Polyester		UFAC Class I / NFPA 260	Exceeds 92,000 Double Rubs (Wyzenbeek Method)
PRODUCT NUMBER	COUNTRY	CLEANING CODES	
1434105	USA	WS	

ADDITIONAL PRODUCT NOTES
Crypton Home, Soil & Stain Repellent Finish, Pfas-Free, Easy To Clean Finish, Ca Tb 117-2013, Anti-Bacterial / Anti-Microbial, Shown Railroaded, Exclusive Pattern, Eco / Environment Plus