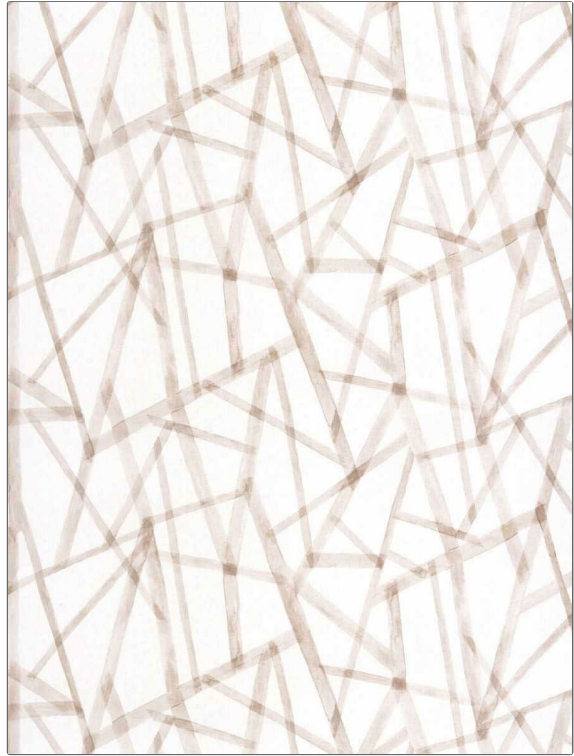


Fabric Product Details

PATTERN	Viewpoint
COLOR	Rosewood
BRAND	APPLICATION
Stroheim	Fabric
USES	CATEGORIES
Bedding, Drapery, Multipurpose, Upholstery	Prints, Linen
BOOK	COLORS
Ambiance (3 Books) Rosewood / Whisper	Lavender / Purple, Pink
DESIGN TYPES	SCALE
Geometric, Print Pattern, Contemporary / Modern, Abstract	Large
DIRECTION SHOWN	
Up the Bolt	



WIDTH	VERTICAL REPEAT	HORIZONTAL REPEAT	CONTENT
59.00 in (149.86 cm)	28.30 in (71.88 cm)	57.80 in (146.81 cm)	100% Linen
BACKING	FIRE CODES	DOUBLE RUBS	PRODUCT NUMBER
	UFAC Class I / NFPA 260	Exceeds 24,000 Double Rubs (Wyzenbeek Method)	1605101
DATE BOOKED	COUNTRY	CLEANING CODES	
02/2024	Austria	S	

ADDITIONAL PRODUCT NOTES
Passes 6,000 Martindale Tst, Ca Tb 117-2013, Exclusive Pattern