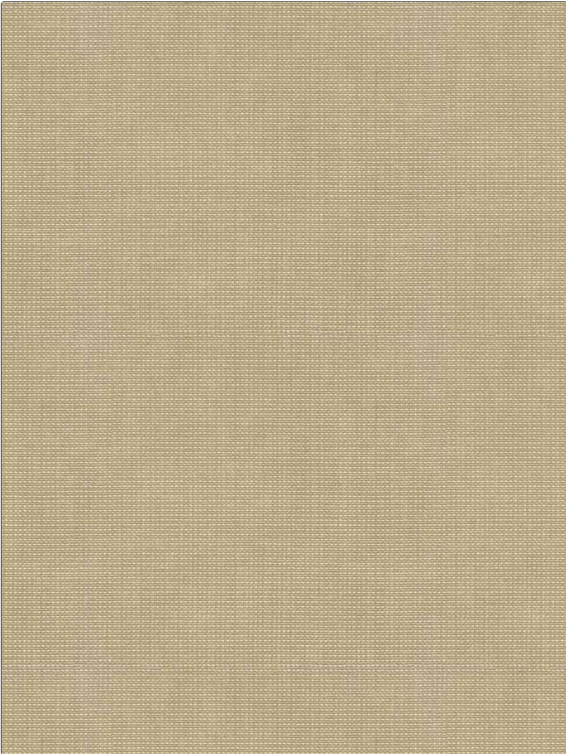


Fabric Product Details

PATTERN Positano Raffia
COLOR Sesame

| | |
|---|---|
| BRAND | APPLICATION |
| Stroheim | Fabric |
| USES | CATEGORIES |
| Upholstery | Raffia, Wovens, Solids / Small Scale Patterns |
| BOOK | COLORS |
| Positano Raffia | Beige |
| DESIGN TYPES | SCALE |
| Small Scale Woven, Solid, Texture Plain | Small |
| DIRECTION SHOWN | |
| Up the Bolt | |



| | | | |
|----------------------|-------------------------|---|--------------------------------------|
| WIDTH | VERTICAL REPEAT | HORIZONTAL REPEAT | CONTENT |
| 54.00 in (137.16 cm) | 0.00 in (0.00 cm) | 0.00 in (0.00 cm) | 48% Polyester, 29% Cotton, 23% Nylon |
| BACKING | FIRE CODES | DOUBLE RUBS | PRODUCT NUMBER |
| | UFAC Class I / NFPA 260 | Exceeds 42,000 Double Rubs (Wyzenbeek Method) | 1875902 |
| DATE BOOKED | COUNTRY | CLEANING CODES | |
| 02/2024 | India | S | |

ADDITIONAL PRODUCT NOTES
 Ca Tb 117-2013, Exclusive Pattern