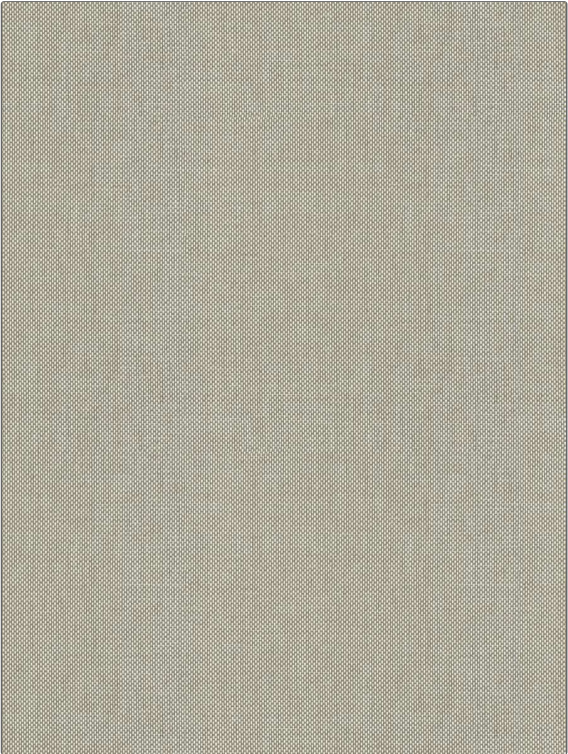


Fabric Product Details

PATTERN Positano Raffia
COLOR Almond

BRAND	APPLICATION
Stroheim	Fabric
USES	CATEGORIES
Upholstery	Raffia, Wovens, Solids / Small Scale Patterns
BOOK	COLORS
Positano Raffia	Taupe / Tan, Linen
DESIGN TYPES	SCALE
Small Scale Woven, Solid, Texture Plain	Small
DIRECTION SHOWN	
Up the Bolt	



WIDTH	VERTICAL REPEAT	HORIZONTAL REPEAT	CONTENT
54.00 in (137.16 cm)	0.00 in (0.00 cm)	0.00 in (0.00 cm)	48% Polyester, 29% Cotton, 23% Nylon
BACKING	FIRE CODES	DOUBLE RUBS	PRODUCT NUMBER
	UFAC Class I / NFPA 260	Exceeds 42,000 Double Rubs (Wyzenbeek Method)	1875906
DATE BOOKED	COUNTRY	CLEANING CODES	
02/2024	India	S	

ADDITIONAL PRODUCT NOTES
 Ca Tb 117-2013, Exclusive Pattern