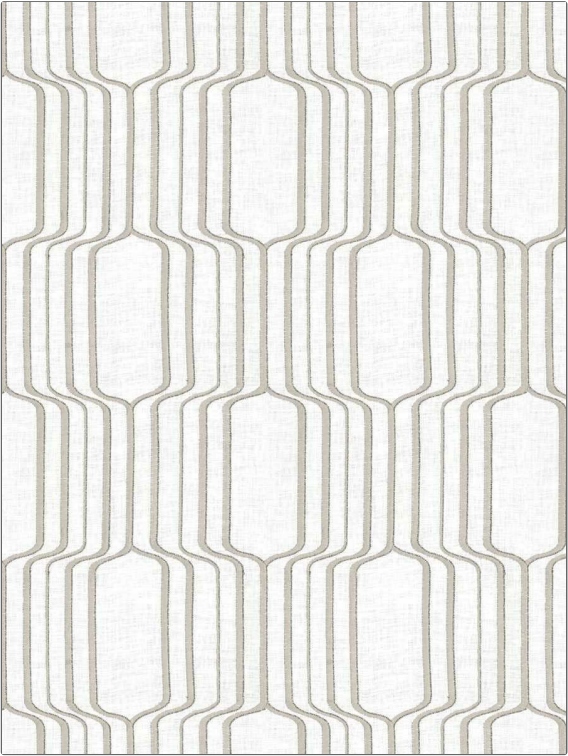


Fabric Product Details

| | | | |
|-----------------|--|--|--|
| PATTERN | Hermes | | |
| COLOR | Chrome | | |
| BRAND | Stroheim | | |
| APPLICATION | Fabric | | |
| USES | Drapery | | |
| CATEGORIES | Sheer, Crewels / Embroideries | | |
| BOOK | Ambiance Narrow Sheers (2 Books) Moonbean / Biscotti | | |
| COLORS | Grey, White | | |
| DESIGN TYPES | Embroidery, Geometric, Contemporary / Modern | | |
| SCALE | Large | | |
| DIRECTION SHOWN | Up the Bolt | | |



| | | | |
|----------------------|---------------------|---------------------|--|
| WIDTH | VERTICAL REPEAT | HORIZONTAL REPEAT | CONTENT |
| 50.00 in (127.00 cm) | 15.35 in (38.99 cm) | 12.50 in (31.75 cm) | Embroidery: 76% Polyester, 24% Lurex, Base: 100% Linen |
| BACKING | PRODUCT NUMBER | DATE BOOKED | COUNTRY |
| | 1968504 | 06/2024 | India |
| CLEANING CODES | | | |
| S | | | |

| |
|---|
| ADDITIONAL PRODUCT NOTES |
| Exclusive Pattern, Embroidered Textiles Are Not, Guaranteed For Precise Color, Matching And Colorfastness., Color Placement Of Embroidery, May Vary. All Measurements, Quoted For Repeats Are, Approximate. |