

Trimming Product Details

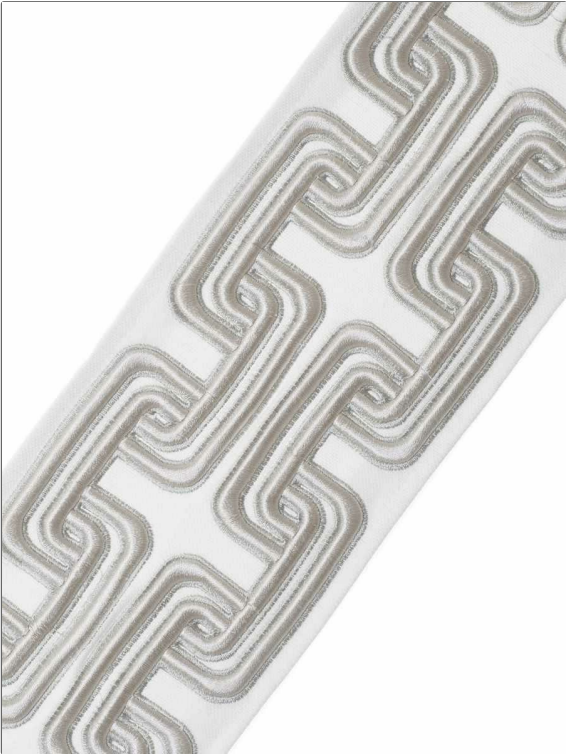
PATTERN Tikal
COLOR Cashmere

BRAND Stroheim
APPLICATION Trimming

USES Bedding, Window, Accessories, Furniture
CATEGORIES Braids / Borders / Tape

BOOK Leading Edge Synchronicity Trim
COLORS Off White / Ivory

DESIGN TYPES Embroidery, Geometric, Architectural, Handcrafted, Fretwork



WIDTH	VERTICAL REPEAT	HORIZONTAL REPEAT	CONTENT
4.75 in (12.06 cm)	3.75 in (9.52 cm)	0.00 in (0.00 cm)	Applique: 90% Viscose, 10% Polyester, Embroidery: 100% Viscose, Base: 59% Cotton, 41% Linen
PRODUCT NUMBER	DATE BOOKED	COUNTRY	
2751602	01/2021	India	

ADDITIONAL PRODUCT NOTES
 Exclusive Pattern, Border / Braid / Tape, Natural Fibers, And Embroidered Textiles, Are Not Guaranteed For, Color Matching, Color, Fastness Or Durability., Cuttings From Current Stock, Is Recommended., Width: 4.75 In