

# Fabric Product Details

**PATTERN** Cortina Linen  
**COLOR** Caramel

**BRAND**

**Stroheim**

**APPLICATION**

**Fabric**

**USES**

**Drapery, Multipurpose, Upholstery**

**CATEGORIES**

**Wovens, Solids / Small Scale Patterns, Linen**

**BOOK**

**Cortina Linen**

**COLORS**

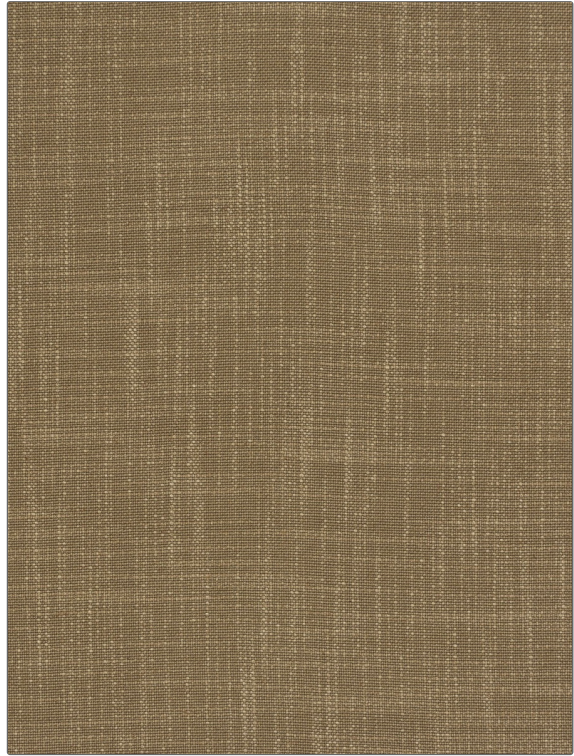
**Taupe / Tan**

**DESIGN TYPES**

**Solid, Texture Plain**

**DIRECTION SHOWN**

**Up the Bolt**



**WIDTH**

**55.00 in (139.70 cm)**

**FINISH**

**Soil & Stain Repellent Finish**

**VERTICAL REPEAT**

**0.00 in (0.00 cm)**

**HORIZONTAL REPEAT**

**0.00 in (0.00 cm)**

**CONTENT**

**58% Viscose, 31% Cotton, 11% Linen**

**BACKING**

**FIRE CODES**

**UFAC Class I, Passes NFPA 260**

**DOUBLE RUBS**

**Exceeds 30,000 Double Rubs (Wyzenbeek Method)**

**PRODUCT NUMBER**

**3975030**

**DATE BOOKED**

**09/2020**

**COUNTRY**

**Italy**

**CLEANING CODES**

**S**

**ADDITIONAL PRODUCT NOTES**

**Soil & Stain Repellent Finish, Pfas-Free, Passes 35,000 Martindale Tst, Ca Tb 117-2013, Exclusive Pattern**