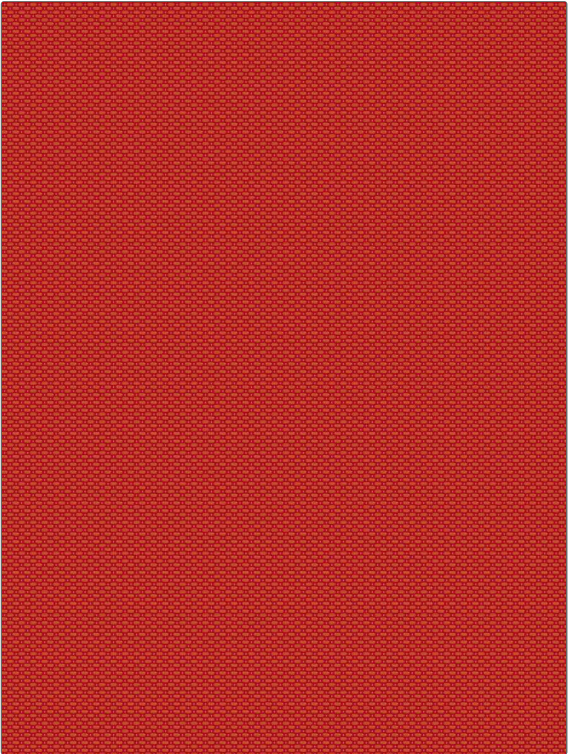


Fabric Product Details

PATTERN	Tulum
COLOR	Magenta
BRAND	APPLICATION
Stroheim	Fabric
USES	CATEGORIES
Drapery, Multipurpose	Outdoor, Easy To Clean, Fibreguard, Wovens, Solids / Small Scale Patterns, Eco / Environment Plus
BOOK	COLORS
Pool House	Pink
DESIGN TYPES	SCALE
Small Scale Woven, Toile, Contemporary / Modern, Diamond, Dots / Circles	Small
RAILOADED	
Not Railroaded	



WIDTH	VERTICAL REPEAT	HORIZONTAL REPEAT	CONTENT
54.00 in (137.16 cm)	0.39 in (0.99 cm)	0.55 in (1.40 cm)	100% Polyolefin
BACKING	FIRE CODES	DOUBLE RUBS	PRODUCT NUMBER
	UFAC Class I / NFPA 260, Passes MVS 302	Exceeds 15,000 Double Rubs (Wyzenbeek Method)	3975303
DATE BOOKED	COUNTRY	CLEANING CODES	
02/2021	India	WW	

ADDITIONAL PRODUCT NOTES
Fibreguard Outdoor, Pfas-Free, Passes 25,000 Martindale Tst, Oeko Tex Standard 100, Indoor / Outdoor, 1,500 Hours Light Fastness, Ca Tb 117-2013, Exclusive Pattern, Eco / Environment Plus