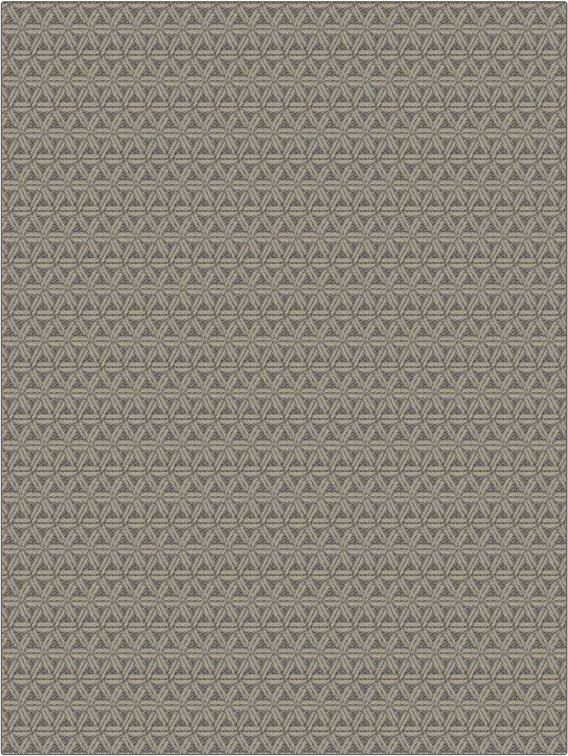


Fabric Product Details

PATTERN	Hacienda
COLOR	Cement
BRAND	APPLICATION
Stroheim	Fabric
USES	CATEGORIES
Drapery, Multipurpose, Upholstery	Outdoor, Easy To Clean, Fibreguard, Wovens, Eco / Environment Plus
BOOK	COLORS
Pool House	Grey
DESIGN TYPES	SCALE
Geometric, Lattice / Fretwork, Small Scale Woven	Small
RAILOADED	
Not Railed	



WIDTH	VERTICAL REPEAT	HORIZONTAL REPEAT	CONTENT
54.00 in (137.16 cm)	2.30 in (5.84 cm)	1.10 in (2.79 cm)	100% Polyolefin
BACKING	FIRE CODES	DOUBLE RUBS	PRODUCT NUMBER
	UFAC Class I / NFPA 260, Passes MVS 302	Exceeds 40,000 Double Rubs (Wyzenbeek Method)	3975902
DATE BOOKED	COUNTRY	CLEANING CODES	
02/2021	India	WW	

ADDITIONAL PRODUCT NOTES
Fibreguard Outdoor, Pfas-Free, Passes 30,000 Martindale Tst, Oeko Tex Standard 100, Indoor / Outdoor, 1,500 Hours Light Fastness, Iso 14001, Ca Tb 117-2013, Exclusive Pattern, Eco / Environment Plus