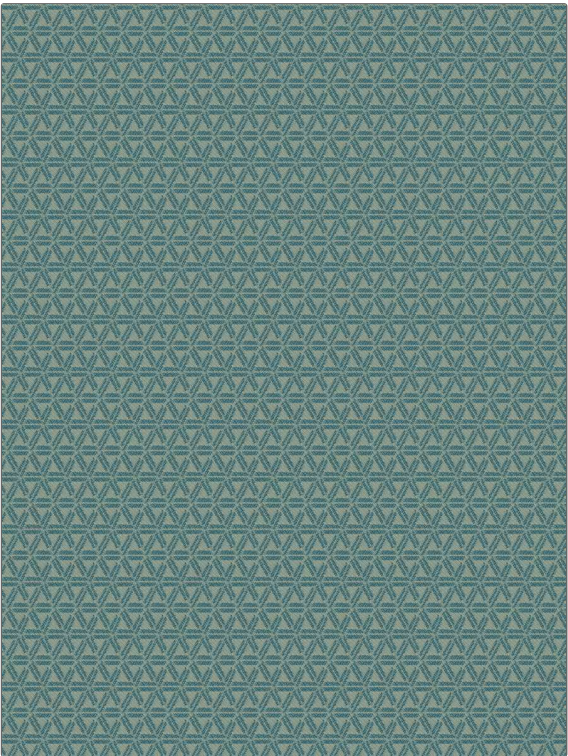


Fabric Product Details

|  |  |
|--|--|
| PATTERN  | Hacienda Reef  |
| COLOR  |  |
| BRAND  | APPLICATION  |
| Stroheim   | Fabric   |
| USES   | CATEGORIES   |
| Drapery, Multipurpose, Upholstery                | Outdoor, Easy To Clean, Fibreguard, Wovens, Eco / Environment Plus |
| BOOK   | COLORS   |
| Pool House                                       | Aqua / Teal  |
| DESIGN TYPES                                     | SCALE  |
| Geometric, Lattice / Fretwork, Small Scale Woven | Small  |
| RAILROADED                                       |  |
| Not Railroaded                                   |  |



|                      |   |   |                 |
|----------------------|---|---|-----------------|
| WIDTH                | VERTICAL REPEAT                         | HORIZONTAL REPEAT                             | CONTENT         |
| 54.00 in (137.16 cm) | 2.30 in (5.84 cm)                       | 1.10 in (2.79 cm)                             | 100% Polyolefin |
| BACKING              | FIRE CODES                              | DOUBLE RUBS                                   | PRODUCT NUMBER  |
|                      | UFAC Class I / NFPA 260, Passes MVS 302 | Exceeds 40,000 Double Rubs (Wyzenbeek Method) | 3975910         |
| DATE BOOKED          | COUNTRY                                 | CLEANING CODES                                |                 |
| 02/2021              | India                                   | WW  |                 |

|  |
|--|
| ADDITIONAL PRODUCT NOTES   |
| Fibreguard Outdoor, Pfas-Free, Passes 30,000 Martindale Tst, Oeko Tex Standard 100, Indoor / Outdoor, 1,500 Hours Light Fastness, Iso 14001, Ca Tb 117-2013, Exclusive Pattern, Eco / Environment Plus |