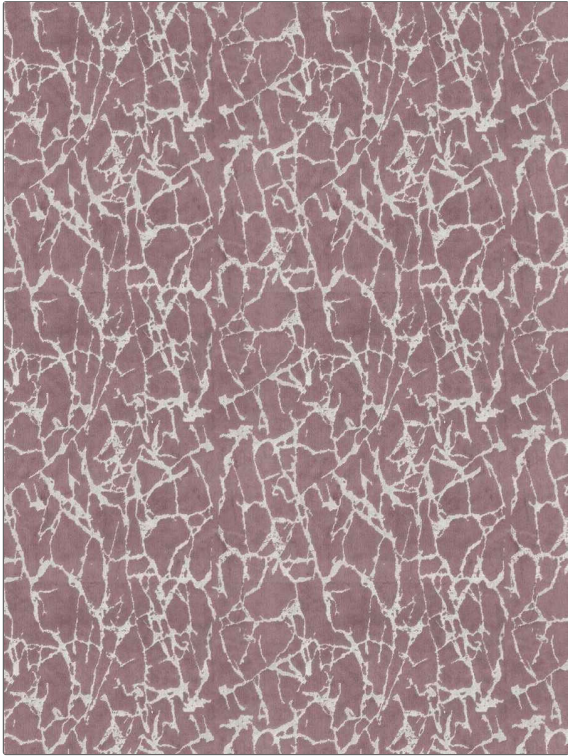


Fabric Product Details

PATTERN	Library
COLOR	Heather
BRAND	APPLICATION
Stroheim	Fabric
USES	CATEGORIES
Bedding, Drapery, Multipurpose, Upholstery	Velvet / Grospoint, Wovens
BOOK	COLORS
Abloom Velvets	Lavender / Purple
DESIGN TYPES	SCALE
Geometric, Novelty, Small Scale Woven, Contemporary / Modern, Abstract	Small
DIRECTION SHOWN	
Up the Bolt	



WIDTH	VERTICAL REPEAT	HORIZONTAL REPEAT	CONTENT
55.00 in (139.70 cm)	14.00 in (35.56 cm)	14.00 in (35.56 cm)	61% Polyester, 39% Cotton
BACKING	FIRE CODES	DOUBLE RUBS	PRODUCT NUMBER
	UFAC Class I / NFPA 260	Exceeds 110,000 Double Rubs (Wyzenbeek Method)	3985002
DATE BOOKED	COUNTRY	CLEANING CODES	
04/2020	Turkey	S	

ADDITIONAL PRODUCT NOTES
Passes 30,000 Martindale Tst, Oeko Tex Standard 100, Iso 14001, Ca Tb 117-2013, Exclusive Pattern, Eco / Environment Plus