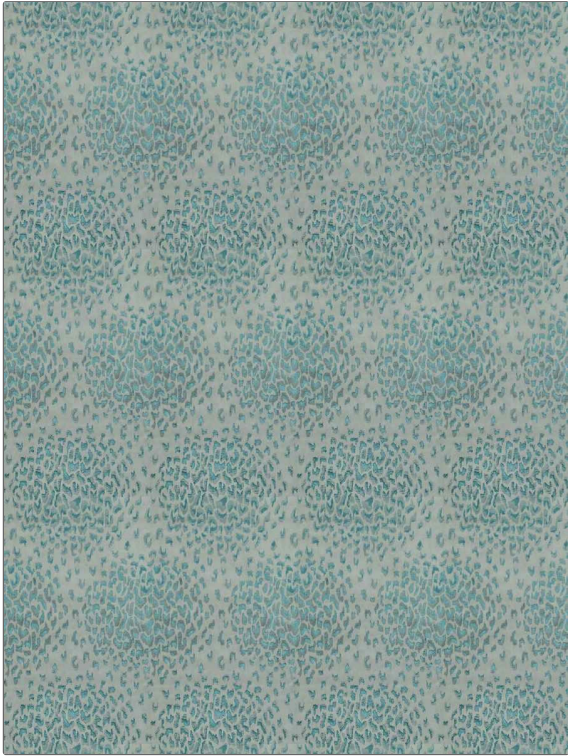


Fabric Product Details

PATTERN **Atelier**
COLOR **Teal**

BRAND	APPLICATION
Stroheim	Fabric
USES	CATEGORIES
Bedding, Upholstery	Velvet / Grospoint, Wovens
BOOK	COLORS
Abloom Velvets	Grey, Aqua / Teal
DESIGN TYPES	SCALE
Animal, Medallion, Contemporary / Modern	Large
DIRECTION SHOWN	
Up the Bolt	



WIDTH	VERTICAL REPEAT	HORIZONTAL REPEAT	CONTENT
55.00 in (139.70 cm)	24.00 in (60.96 cm)	14.00 in (35.56 cm)	61% Polyester, 39% Cotton
BACKING	FIRE CODES	DOUBLE RUBS	PRODUCT NUMBER
	UFAC Class I / NFPA 260	Exceeds 60,000 Double Rubs (Wyzenbeek Method)	3985405
DATE BOOKED	COUNTRY	CLEANING CODES	
04/2020	Turkey	S	

ADDITIONAL PRODUCT NOTES

Passes 30,000 Martindale Tst, Oeko Tex Standard 100, Iso 14001, Ca Tb 117-2013, Exclusive Pattern, Eco / Environment Plus