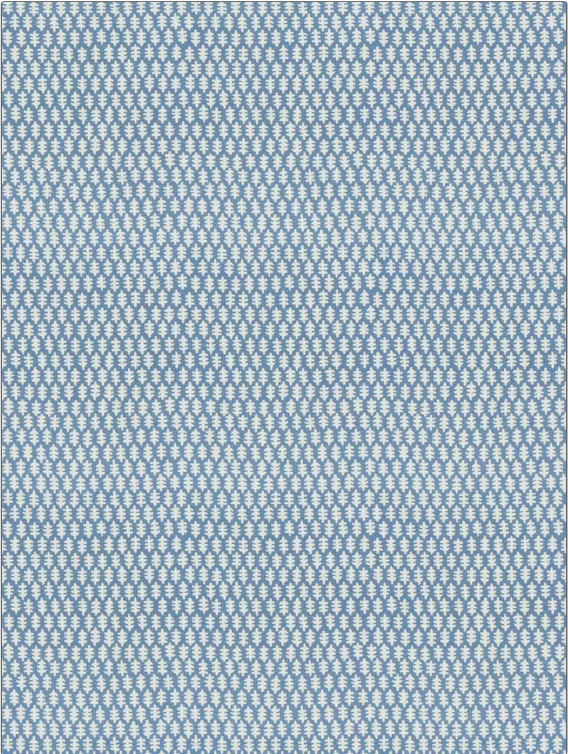


Fabric Product Details

PATTERN **VIVI**
COLOR **Bluebell**

BRAND	APPLICATION
Stroheim	Fabric
USES	CATEGORIES
Bedding, Drapery, Multipurpose, Upholstery	Solids / Small Scale Patterns, Prints, Linen
BOOK	COLORS
Color: Bluebell - Laurel	Blue
DESIGN TYPES	SCALE
Global / Ethnic, Leaves, Print Pattern	Small
DIRECTION SHOWN	
Up the Bolt	



WIDTH	VERTICAL REPEAT	HORIZONTAL REPEAT	CONTENT
54.00 in (137.16 cm)	11.62 in (29.51 cm)	9.00 in (22.86 cm)	57% Linen, 43% Cotton
BACKING	FIRE CODES	DOUBLE RUBS	PRODUCT NUMBER
	UFAC Class I / NFPA 260	Exceeds 32,000 Double Rubs (Wyzenbeek Method)	4342201
DATE BOOKED	COUNTRY	CLEANING CODES	
06/2021	China	S	

ADDITIONAL PRODUCT NOTES
Ca Tb 117-2013, Exclusive Pattern