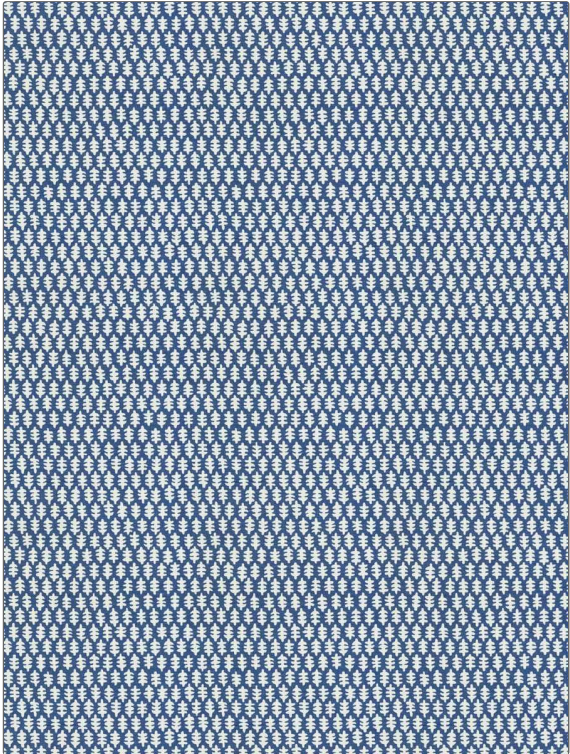


# Fabric Product Details

**PATTERN** VIVI  
**COLOR** Navy

<b>BRAND</b> Stroheim	<b>APPLICATION</b> Fabric
<b>USES</b> Bedding, Drapery, Multipurpose, Upholstery	<b>CATEGORIES</b> Solids / Small Scale Patterns, Prints, Linen
<b>BOOK</b> Color: Bluebell - Laurel	<b>COLORS</b> Blue, Navy
<b>DESIGN TYPES</b> Global / Ethnic, Leaves, Print Pattern	<b>SCALE</b> Small
<b>DIRECTION SHOWN</b> Up the Bolt	



<b>WIDTH</b> 54.00 in (137.16 cm)	<b>VERTICAL REPEAT</b> 11.62 in (29.51 cm)	<b>HORIZONTAL REPEAT</b> 9.00 in (22.86 cm)	<b>CONTENT</b> 57% Linen, 43% Cotton
<b>BACKING</b>	<b>FIRE CODES</b> UFAC Class I / NFPA 260	<b>DOUBLE RUBS</b> Exceeds 32,000 Double Rubs (Wyzenbeek Method)	<b>PRODUCT NUMBER</b> 4342202
<b>DATE BOOKED</b> 06/2021	<b>COUNTRY</b> China	<b>CLEANING CODES</b> S	

**ADDITIONAL PRODUCT NOTES**  
 Ca Tb 117-2013, Exclusive Pattern