

Fabric Product Details

PATTERN Tahini
COLOR Black Pearl

BRAND

Stroheim

APPLICATION

Fabric

USES

Bedding, Drapery

CATEGORIES

**Crewels / Embroideries,
Linen**

BOOK

**Color Embroideries (2
Books) Quartz To Citronella**

COLORS

Black, Linen, White

DESIGN TYPES

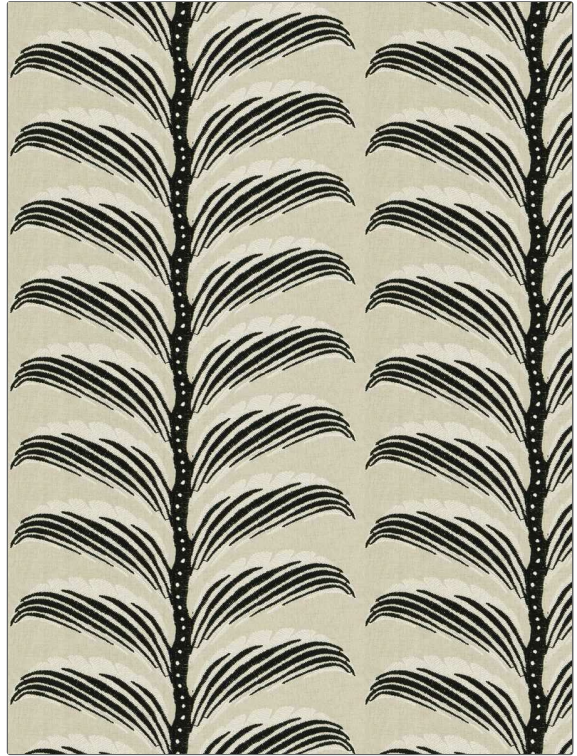
**Embroidery, Leaves,
Stripes, Tropical / Botanical**

SCALE

Large

RAILROADED

Not Railroaded



WIDTH

51.00 in (129.54 cm)

VERTICAL REPEAT

3.75 in (9.52 cm)

HORIZONTAL REPEAT

17.00 in (43.18 cm)

CONTENT

**Embroidery: 100%
Polyester, Base: 55% Linen,
45% Cotton**

BACKING

PRODUCT NUMBER

6553002

DATE BOOKED

06/2022

COUNTRY

India

CLEANING CODES

S

ADDITIONAL PRODUCT NOTES

Ca Tb 117-2013, Exclusive Pattern, Embroidered Textiles Are Not, Guaranteed For Precise Color, Matching And Colorfastness., Color Placement Of Embroidery, May Vary. All Measurements, Quoted For Repeats Are, Approximate.