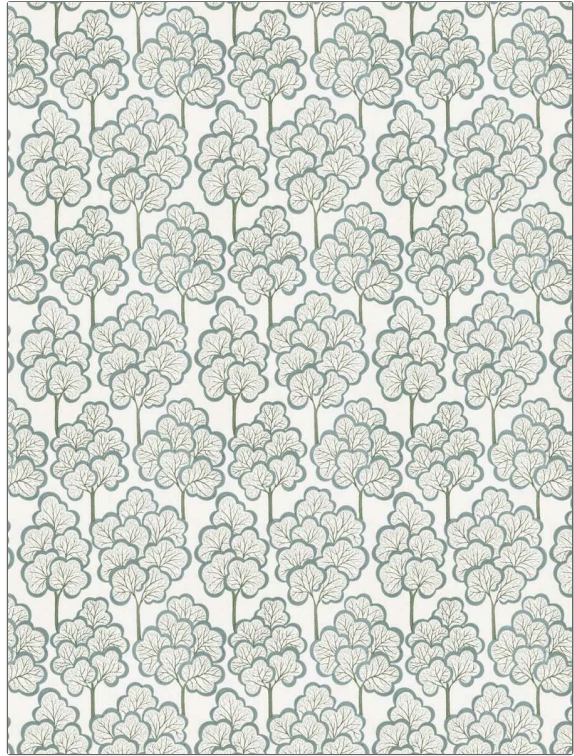


Fabric Product Details

PATTERN	Zahara
COLOR	Eucalyptus
BRAND	APPLICATION
Stroheim	Fabric
USES	CATEGORIES
Bedding, Drapery	Crewels / Embroideries, Linen
BOOK	COLORS
Color Embroideries (2 Books) Azure To Coral Bells	Light Blue, Aqua / Teal, Light Green
DESIGN TYPES	SCALE
Embroidery, Leaves, Tropical / Botanical, Contemporary / Modern, Crewel	Large
DIRECTION SHOWN	
Up the Bolt	



WIDTH	VERTICAL REPEAT	HORIZONTAL REPEAT	CONTENT
51.00 in (129.54 cm)	18.75 in (47.62 cm)	17.00 in (43.18 cm)	Embroidery: 45% Acrylic, 35% Viscose, 20% Spun Polyester, Base: 60% Linen, 40% Cotton
BACKING	PRODUCT NUMBER	DATE BOOKED	COUNTRY
	6554704	06/2022	India
CLEANING CODES			
S			

ADDITIONAL PRODUCT NOTES

Ca Tb 117-2013, Exclusive Pattern, Embroidered Textiles Are Not, Guaranteed For Precise Color, Matching And Colorfastness., Color Placement Of Embroidery, May Vary. All Measurements, Quoted For Repeats Are, Approximate.