

Fabric Product Details

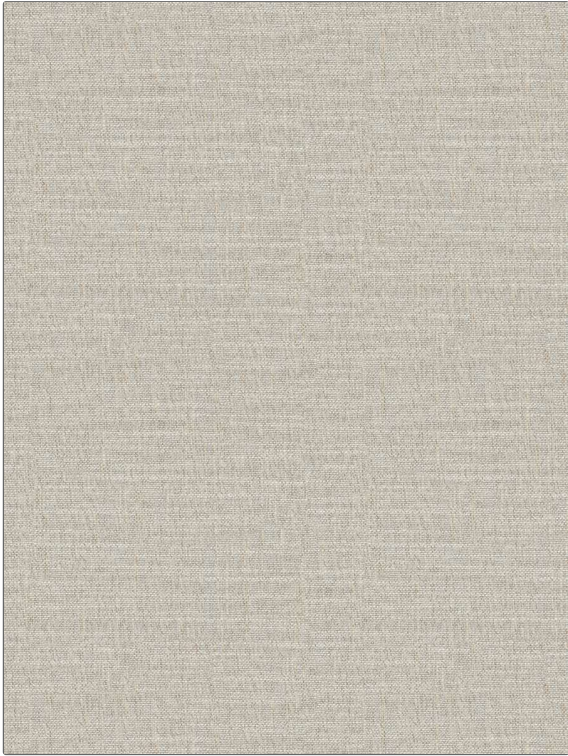
PATTERN Lugo
COLOR Biscuit

BRAND Stroheim
APPLICATION Fabric

USES Bedding, Drapery
CATEGORIES Wide Width, NFPA 701 FR, Wovens, Solids / Small Scale Patterns, Eco / Environment Plus

BOOK Ormi Wide Sheers
COLORS Taupe / Tan, Linen

DESIGN TYPES Solid, Texture Plain
DIRECTION SHOWN Railroaded



WIDTH	VERTICAL REPEAT	HORIZONTAL REPEAT	CONTENT
119.69 in (304.01 cm)	0.00 in (0.00 cm)	0.00 in (0.00 cm)	100% Polyester
BACKING	FIRE CODES	PRODUCT NUMBER	DATE BOOKED
	Passes NFPA 701, Passes MVS 302	8277412	02/2023
COUNTRY	CLEANING CODES		
India	P		

ADDITIONAL PRODUCT NOTES
 Oeko Tex Standard 100, Iso 14001, Shown Railroaded, Exclusive Pattern, Eco / Environment Plus