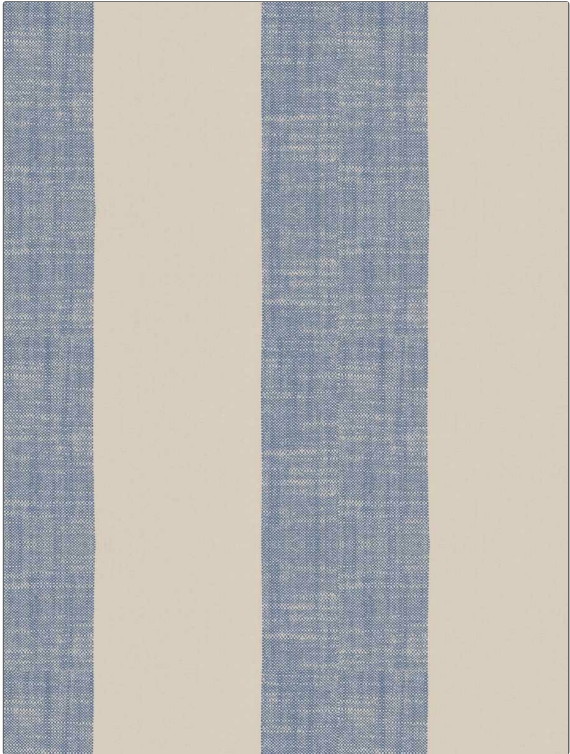


Fabric Product Details

PATTERN Chalina Stripe
COLOR Navy

| | |
|---|--|
| BRAND | APPLICATION |
| Stroheim | Fabric |
| USES | CATEGORIES |
| Bedding, Drapery | Wovens, Eco / Environment Plus, Linen |
| BOOK | COLORS |
| Color Vol. II Oceanside / Tahiti | Blue |
| DESIGN TYPES | SCALE |
| Stripes | Large |
| DIRECTION SHOWN | |
| Up the Bolt | |



| | | | |
|-----------------------------|--------------------------|-----------------------------------|-------------------------------|
| WIDTH | VERTICAL REPEAT | HORIZONTAL REPEAT | CONTENT |
| 54.00 in (137.16 cm) | 0.00 in (0.00 cm) | 8.00 in (20.32 cm) | 72% Viscose, 28% Linen |
| BACKING | FIRE CODES | DOUBLE RUBS | PRODUCT NUMBER |
| | Passes MVS 302 | Exceeds 20,000 Double Rubs | 8278111 |
| DATE BOOKED | COUNTRY | CLEANING CODES | |
| 05/2023 | India | P | |

ADDITIONAL PRODUCT NOTES
 Passes 20,000 Martindale Tst, Oeko Tex Standard 100, Iso 14001, Exclusive Pattern, Eco / Environment Plus