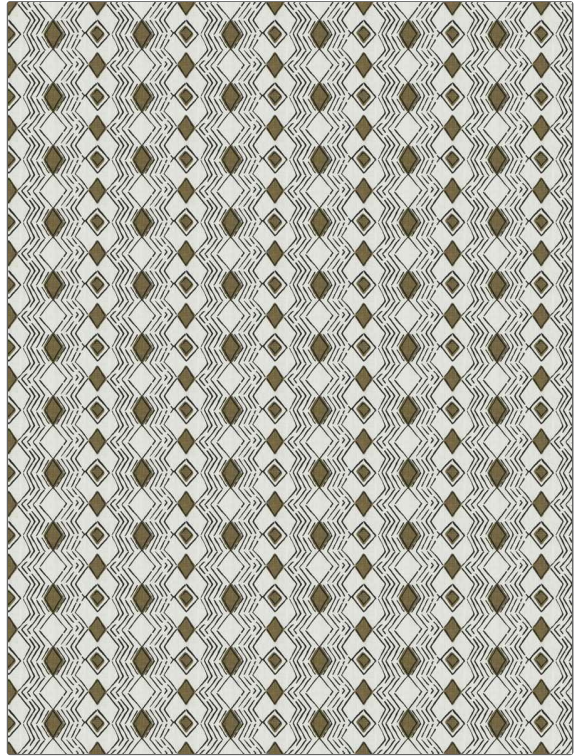


Fabric Product Details

PATTERN	Arapahoe
COLOR	Saddle
BRAND	Stroheim
APPLICATION	Fabric
USES	Bedding, Drapery, Multipurpose, Upholstery
CATEGORIES	Solids / Small Scale Patterns, Prints, Linen
BOOK	Escape (3 Books) Tumbleweed / Night
COLORS	Black, Taupe / Tan
DESIGN TYPES	Geometric, Global / Ethnic, Print Pattern, Stripes, Diamond
SCALE	Medium
DIRECTION SHOWN	Up the Bolt



WIDTH	VERTICAL REPEAT	HORIZONTAL REPEAT	CONTENT
54.00 in (137.16 cm)	3.00 in (7.62 cm)	4.25 in (10.80 cm)	100% Linen
BACKING	FIRE CODES	DOUBLE RUBS	PRODUCT NUMBER
	UFAC Class I / NFPA 260	Exceeds 36,000 Double Rubs (Wyzenbeek Method)	8320302
DATE BOOKED	COUNTRY	CLEANING CODES	
02/2023	India	S	

ADDITIONAL PRODUCT NOTES
Ca Tb 117-2013, Exclusive Pattern