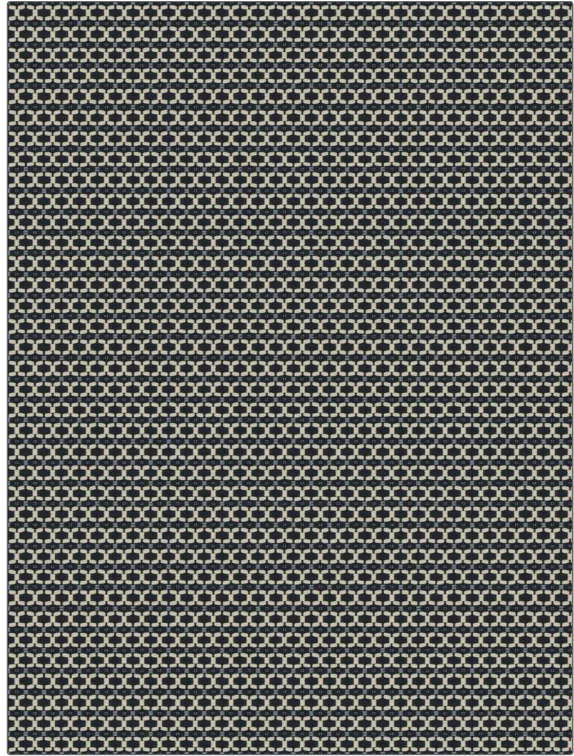


Fabric Product Details

PATTERN	Keynot
COLOR	Blue Ridge
BRAND	APPLICATION
Stroheim	Fabric
USES	CATEGORIES
Upholstery	Wovens, Solids / Small Scale Patterns, Eco / Environment Plus
BOOK	COLORS
Escape (3 Books) Mineral / Blue Ridge	Blue, Light Blue
DESIGN TYPES	SCALE
Global / Ethnic, Small Scale Woven, Ogee, Diamond, Dots / Circles	Small
DIRECTION SHOWN	
Up the Bolt	



WIDTH	VERTICAL REPEAT	HORIZONTAL REPEAT	CONTENT
54.00 in (137.16 cm)	1.00 in (2.54 cm)	0.75 in (1.90 cm)	40% Recycled Cotton, 34% Cotton, 26% Recycled Polyester
BACKING	FIRE CODES	DOUBLE RUBS	PRODUCT NUMBER
	UFAC Class I / NFPA 260	Exceeds 15,000 Double Rubs (Wyzenbeek Method)	8326503
DATE BOOKED	COUNTRY	CLEANING CODES	
02/2023	USA	S	

ADDITIONAL PRODUCT NOTES
Ca Tb 117-2013, Exclusive Pattern, Eco / Environment Plus