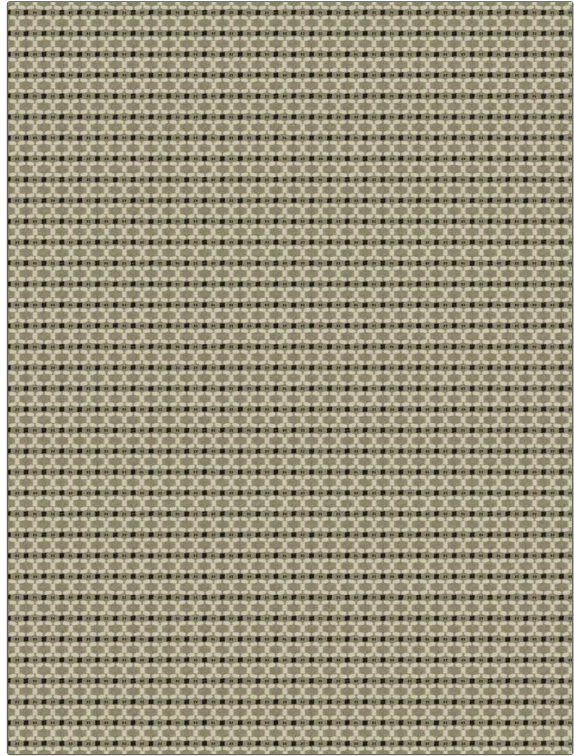


# Fabric Product Details

**PATTERN** Keynot  
**COLOR** Boulder

|   |   |
|---|---|
| <b>BRAND</b>  | <b>APPLICATION</b>  |
| Stroheim  | Fabric  |
| <b>USES</b>   | <b>CATEGORIES</b>   |
| Upholstery  | Wovens, Solids / Small Scale Patterns, Eco / Environment Plus |
| <b>BOOK</b>   | <b>COLORS</b>   |
| Escape (3 Books)<br>Tumbleweed / Night                            | Black, Linen, White   |
| <b>DESIGN TYPES</b>   | <b>SCALE</b>  |
| Global / Ethnic, Small Scale Woven, Ogee, Diamond, Dots / Circles | Small   |
| <b>DIRECTION SHOWN</b>  |   |
| Up the Bolt   |   |



|                      |                         |   |   |
|----------------------|-------------------------|---|---|
| <b>WIDTH</b>         | <b>VERTICAL REPEAT</b>  | <b>HORIZONTAL REPEAT</b>                      | <b>CONTENT</b>  |
| 54.00 in (137.16 cm) | 1.00 in (2.54 cm)       | 0.75 in (1.90 cm)                             | 40% Recycled Cotton, 34% Cotton, 26% Recycled Polyester |
| <b>BACKING</b>       | <b>FIRE CODES</b>       | <b>DOUBLE RUBS</b>                            | <b>PRODUCT NUMBER</b>                                   |
|                      | UFAC Class I / NFPA 260 | Exceeds 15,000 Double Rubs (Wyzenbeek Method) | 8326504   |
| <b>DATE BOOKED</b>   | <b>COUNTRY</b>          | <b>CLEANING CODES</b>                         |   |
| 02/2023              | USA                     | S   |   |

**ADDITIONAL PRODUCT NOTES**

Ca Tb 117-2013, Exclusive Pattern, Eco / Environment Plus