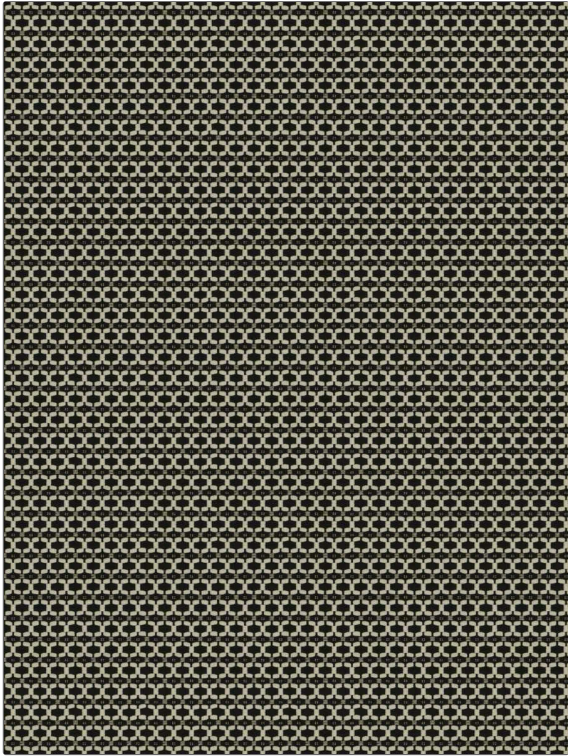


# Fabric Product Details

**PATTERN** **Keynot**  
**COLOR** **Night**

<b>BRAND</b>	<b>APPLICATION</b>
<b>Stroheim</b>	<b>Fabric</b>
<b>USES</b>	<b>CATEGORIES</b>
<b>Upholstery</b>	<b>Wovens, Solids / Small Scale Patterns, Eco / Environment Plus</b>
<b>BOOK</b>	<b>COLORS</b>
<b>Escape (3 Books) Tumbleweed / Night</b>	<b>Black, White</b>
<b>DESIGN TYPES</b>	<b>SCALE</b>
<b>Global / Ethnic, Small Scale Woven, Ogee, Diamond, Dots / Circles</b>	<b>Small</b>
<b>DIRECTION SHOWN</b>	
<b>Up the Bolt</b>	



<b>WIDTH</b>	<b>VERTICAL REPEAT</b>	<b>HORIZONTAL REPEAT</b>	<b>CONTENT</b>
<b>54.00 in (137.16 cm)</b>	<b>1.00 in (2.54 cm)</b>	<b>0.75 in (1.90 cm)</b>	<b>40% Recycled Cotton, 34% Cotton, 26% Recycled Polyester</b>
<b>BACKING</b>	<b>FIRE CODES</b>	<b>DOUBLE RUBS</b>	<b>PRODUCT NUMBER</b>
	<b>UFAC Class I / NFPA 260</b>	<b>Exceeds 15,000 Double Rubs (Wyzenbeek Method)</b>	<b>8326505</b>
<b>DATE BOOKED</b>	<b>COUNTRY</b>	<b>CLEANING CODES</b>	
<b>02/2023</b>	<b>USA</b>	<b>S</b>	

**ADDITIONAL PRODUCT NOTES**

**Ca Tb 117-2013, Exclusive Pattern, Eco / Environment Plus**