

Fabric Product Details

PATTERN
COLOR

**Frenzy Stripe
Saddle**

BRAND

Stroheim

APPLICATION

Fabric

USES

**Bedding, Drapery,
Multipurpose**

CATEGORIES

**Prints, Crewels /
Embroideries, Linen**

BOOK

**Escape (3 Books) Terra
Cotta / Whiskey**

COLORS

**Light Blue, Brown, Taupe /
Tan**

DESIGN TYPES

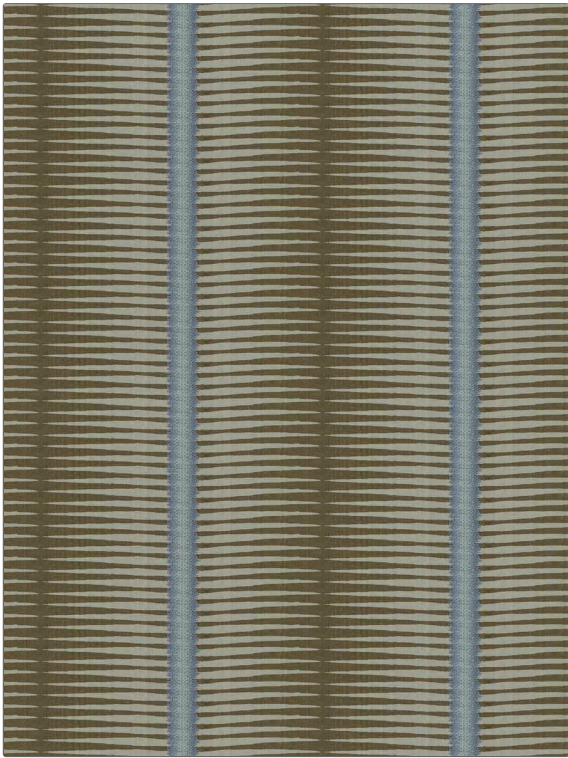
**Embroidery, Global /
Ethnic, Print Pattern,
Stripes**

SCALE

Large

DIRECTION SHOWN

Up the Bolt



WIDTH

52.00 in (132.08 cm)

VERTICAL REPEAT

1.00 in (2.54 cm)

HORIZONTAL REPEAT

13.00 in (33.02 cm)

CONTENT

**Embroidery: 80% Viscose,
20% Polyester, Base: 100%
Linen**

BACKING

PRODUCT NUMBER

8336101

DATE BOOKED

02/2023

COUNTRY

India

CLEANING CODES

S

ADDITIONAL PRODUCT NOTES

Exclusive Pattern, Embroidered Textiles Are Not, Guaranteed For Precise Color, Matching And Colorfastness., Color Placement Of Embroidery, May Vary. All Measurements, Quoted For Repeats Are, Approximate.