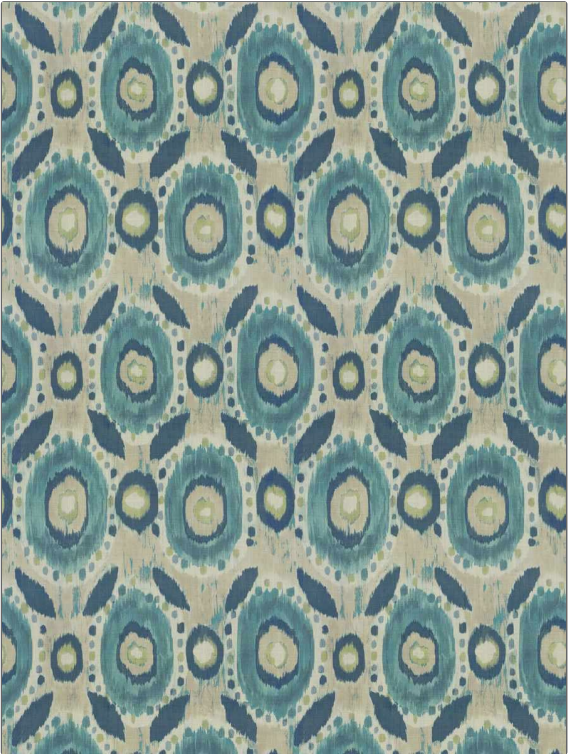


# Fabric Product Details

**PATTERN** Vermejo  
**COLOR** Oceanside

<b>BRAND</b>	<b>APPLICATION</b>
Stroheim	Fabric
<b>USES</b>	<b>CATEGORIES</b>
Bedding, Drapery, Multipurpose, Upholstery	Prints, Linen
<b>BOOK</b>	<b>COLORS</b>
Color Vol. II Oceanside / Tahiti	Blue, Light Blue, Aqua / Teal
<b>DESIGN TYPES</b>	<b>SCALE</b>
Global / Ethnic, Print Pattern	Large
<b>DIRECTION SHOWN</b>	
Up the Bolt	



<b>WIDTH</b>	<b>VERTICAL REPEAT</b>	<b>HORIZONTAL REPEAT</b>	<b>CONTENT</b>
59.00 in (149.86 cm)	27.00 in (68.58 cm)	27.00 in (68.58 cm)	100% Linen
<b>BACKING</b>	<b>FIRE CODES</b>	<b>DOUBLE RUBS</b>	<b>PRODUCT NUMBER</b>
	UFAC Class I / NFPA 260	Exceeds 10,000 Double Rubs (Wyzenbeek Method)	8343009
<b>DATE BOOKED</b>	<b>COUNTRY</b>	<b>CLEANING CODES</b>	
05/2023	Austria	S	

**ADDITIONAL PRODUCT NOTES**  
 Ca Tb 117-2013, Exclusive Pattern