

## Fabric Product Details

**PATTERN** 05395  
**COLOR** Sage

**BRAND**

**Trend**

**USES**

**Bedding, Drapery**

**BOOK**

**Lifestyles By Color Vol. XI(3 Books) Mist / Blue**

**DESIGN TYPES**

**Embroidery, Leaves**

**DIRECTION SHOWN**

**Up the Bolt**

**APPLICATION**

**Fabric**

**CATEGORIES**

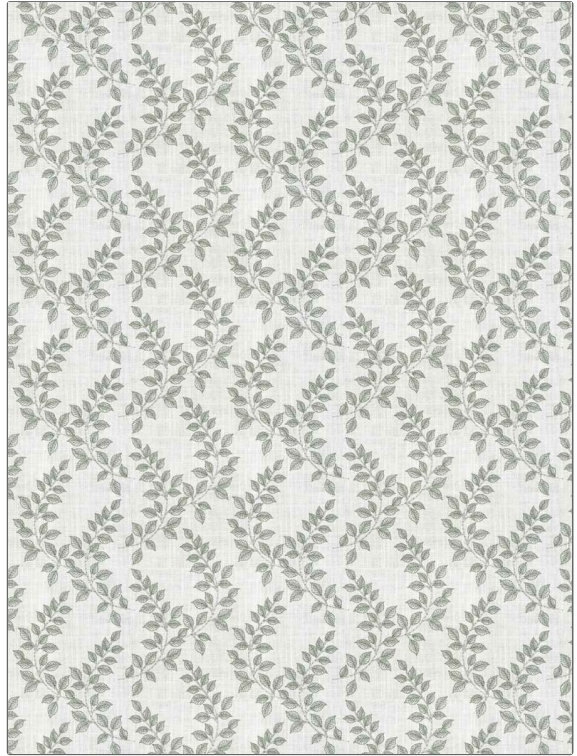
**Crewels / Embroideries**

**COLORS**

**Light Green**

**SCALE**

**Small**



**WIDTH**

**51.00 in (129.54 cm)**

**VERTICAL REPEAT**

**6.38 in (16.21 cm)**

**HORIZONTAL REPEAT**

**10.25 in (26.04 cm)**

**CONTENT**

**Embroidery: 100% Polyester, Base: 70% Polyester, 30% Cotton**

**BACKING**

**PRODUCT NUMBER**

**1458303**

**DATE BOOKED**

**01/2024**

**COUNTRY**

**India**

**CLEANING CODES**

**S**

**ADDITIONAL PRODUCT NOTES**

**Ca Tb 117-2013, Embroidered Textiles Are Not, Guaranteed For Precise Color, Matching And Colorfastness., Color Placement Of Embroidery, May Vary. All Measurements, Quoted For Repeats Are, Approximate.**