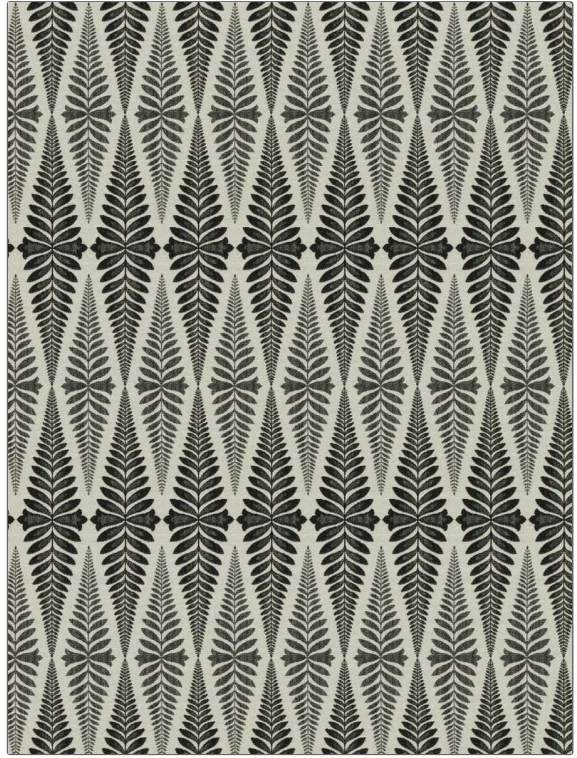


Fabric Product Details

| | |
|--|-------------------------|
| PATTERN | 04898 |
| COLOR | Black |
| BRAND | APPLICATION |
| Trend | Fabric |
| USES | CATEGORIES |
| Upholstery | Wovens, Chenille |
| BOOK | COLORS |
| Wovens By Color Vol. IV (4 Books) Linen / Slate | Black |
| DESIGN TYPES | SCALE |
| Floral, Jacquard Pattern, Tropical / Botanical, Diamond | Large |
| RAILROADED | |
| Not Railed | |



| | | | |
|-----------------------------|--------------------------------|--|---------------------------------|
| WIDTH | VERTICAL REPEAT | HORIZONTAL REPEAT | CONTENT |
| 56.00 in (142.24 cm) | 13.50 in (34.29 cm) | 3.50 in (8.89 cm) | 65% Polyester, 35% Rayon |
| BACKING | FIRE CODES | DOUBLE RUBS | PRODUCT NUMBER |
| | UFAC Class I / NFPA 260 | Exceeds 40,000 Double Rubs (Wyzenbeek Method) | 2872302 |
| DATE BOOKED | COUNTRY | CLEANING CODES | |
| 09/2020 | China | S | |

| |
|---------------------------------|
| ADDITIONAL PRODUCT NOTES |
| Ca Tb 117-2013 |