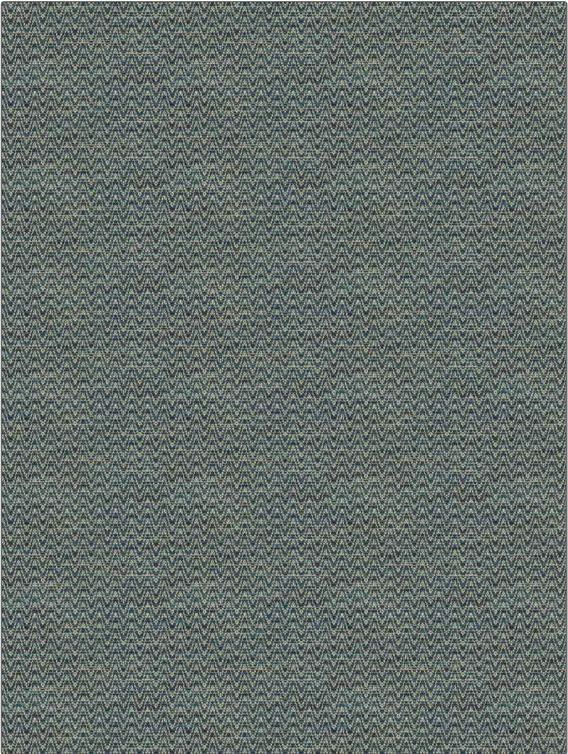


# Fabric Product Details

**PATTERN** 04876  
**COLOR** Marine

<b>BRAND</b>	<b>APPLICATION</b>
<b>Trend</b>	<b>Fabric</b>
<b>USES</b>	<b>CATEGORIES</b>
<b>Upholstery</b>	<b>Wovens</b>
<b>BOOK</b>	<b>COLORS</b>
<b>Wovens By Color Vol. IV (4 Books) Sapphire / Marine</b>	<b>Blue, Aqua / Teal</b>
<b>DESIGN TYPES</b>	<b>SCALE</b>
<b>Geometric, Small Scale Woven, Bargello</b>	<b>Small</b>
<b>DIRECTION SHOWN</b>	
<b>Up the Bolt</b>	



<b>WIDTH</b>	<b>VERTICAL REPEAT</b>	<b>HORIZONTAL REPEAT</b>	<b>CONTENT</b>
<b>55.00 in (139.70 cm)</b>	<b>0.75 in (1.90 cm)</b>	<b>0.50 in (1.27 cm)</b>	<b>88% Polyester, 12% Viscose</b>
<b>BACKING</b>	<b>FIRE CODES</b>	<b>DOUBLE RUBS</b>	<b>PRODUCT NUMBER</b>
	<b>UFAC Class I / NFPA 260</b>	<b>Exceeds 30,000 Double Rubs (Wyzenbeek Method)</b>	<b>2875701</b>
<b>DATE BOOKED</b>	<b>COUNTRY</b>	<b>CLEANING CODES</b>	
<b>09/2020</b>	<b>India</b>	<b>S</b>	

**ADDITIONAL PRODUCT NOTES**  
**Ca Tb 117-2013**