

# Fabric Product Details

**PATTERN** 04862  
**COLOR** 01

**BRAND**

**Trend**

**APPLICATION**

**Fabric**

**USES**

**Upholstery**

**CATEGORIES**

**Wovens, Solids / Small Scale Patterns**

**COLORS**

**Blue, Light Blue, Aqua / Teal**

**DESIGN TYPES**

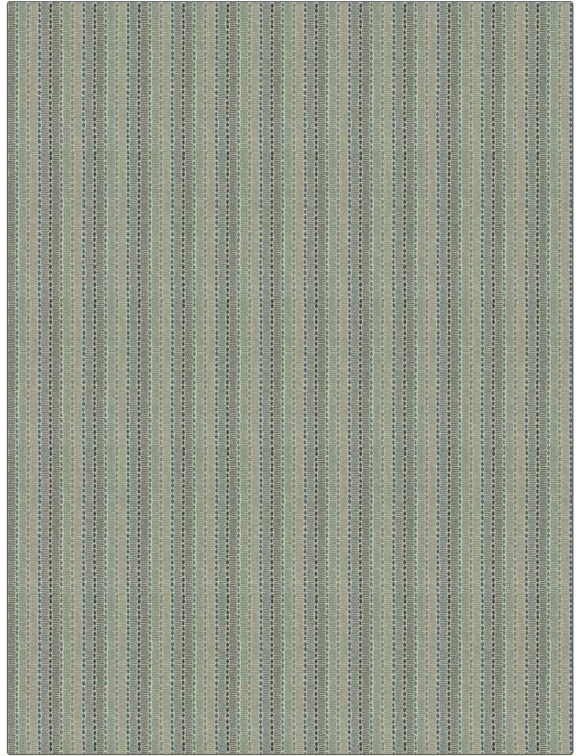
**Small Scale Woven, Stripes, Dots / Circles**

**SCALE**

**Small**

**DIRECTION SHOWN**

**Railroaded**



**WIDTH**

**54.00 in (137.16 cm)**

**VERTICAL REPEAT**

**7.12 in (18.08 cm)**

**HORIZONTAL REPEAT**

**2.12 in (5.38 cm)**

**CONTENT**

**86% Polyester, 10% Rayon, 4% Linen**

**BACKING**

**100% Acrylic Backing**

**FIRE CODES**

**UFAC Class I / NFPA 260**

**DOUBLE RUBS**

**Exceeds 9,000 Double Rubs (Wyzenbeek Method)**

**PRODUCT NUMBER**

**2891401**

**COUNTRY**

**China**

**CLEANING CODES**

**WS**

**ADDITIONAL PRODUCT NOTES**

**Passes 15,000 Martindale Tst, Ca Tb 117-2013, 100% Acrylic Backing, Shown Railroaded**