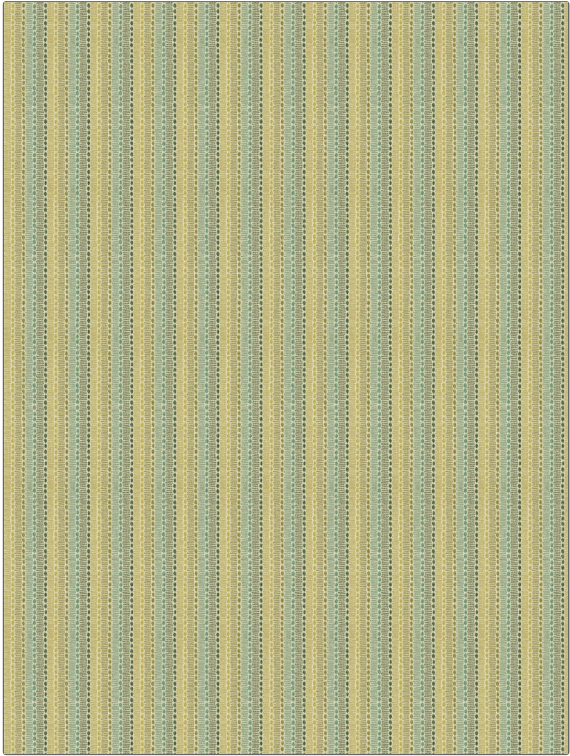


# Fabric Product Details

**PATTERN** 04862  
**COLOR** 02

<b>BRAND</b>	<b>APPLICATION</b>
<b>Trend</b>	<b>Fabric</b>
<b>USES</b>	<b>CATEGORIES</b>
<b>Upholstery</b>	<b>Wovens, Solids / Small Scale Patterns</b>
<b>COLORS</b>	<b>DESIGN TYPES</b>
<b>Green, Aqua / Teal, Light Green</b>	<b>Small Scale Woven, Stripes, Dots / Circles</b>
<b>SCALE</b>	<b>DIRECTION SHOWN</b>
<b>Small</b>	<b>Railroaded</b>



<b>WIDTH</b>	<b>VERTICAL REPEAT</b>	<b>HORIZONTAL REPEAT</b>	<b>CONTENT</b>
<b>54.00 in (137.16 cm)</b>	<b>7.12 in (18.08 cm)</b>	<b>2.12 in (5.38 cm)</b>	<b>86% Polyester, 10% Rayon, 4% Linen</b>
<b>BACKING</b>	<b>FIRE CODES</b>	<b>DOUBLE RUBS</b>	<b>PRODUCT NUMBER</b>
<b>100% Acrylic Backing</b>	<b>UFAC Class I / NFPA 260</b>	<b>Exceeds 9,000 Double Rubs (Wyzenbeek Method)</b>	<b>2891402</b>
<b>COUNTRY</b>	<b>CLEANING CODES</b>		
<b>China</b>	<b>WS</b>		

**ADDITIONAL PRODUCT NOTES**

**Passes 15,000 Martindale Tst, Ca Tb 117-2013, 100% Acrylic Backing, Shown Railroaded**