

## Fabric Product Details

**PATTERN** 03186  
**COLOR** Cobalt

**BRAND**

**Trend**

**USES**

**Bedding, Drapery**

**COLORS**

**Blue**

**SCALE**

**Medium**

**APPLICATION**

**Fabric**

**CATEGORIES**

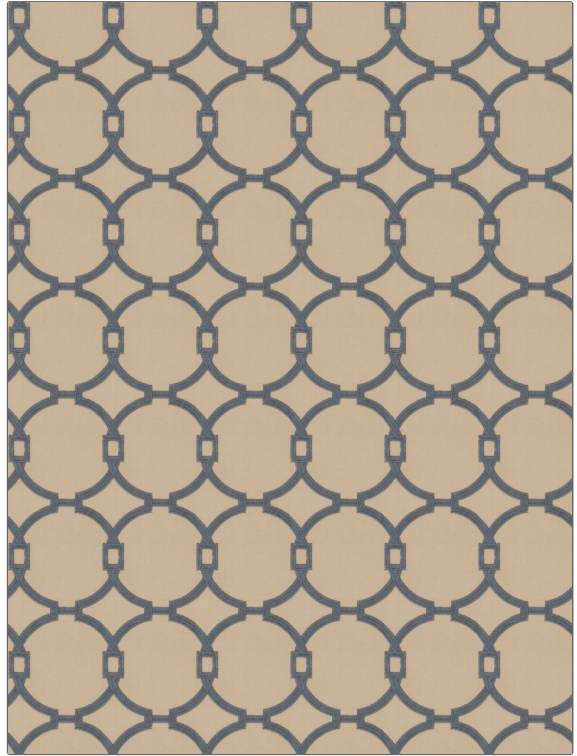
**Crewels / Embroideries**

**DESIGN TYPES**

**Embroidery, Lattice / Fretwork, Dots / Circles**

**RAILROADED**

**Not Railroaded**



**WIDTH**

**52.00 in (132.08 cm)**

**VERTICAL REPEAT**

**5.25 in (13.34 cm)**

**HORIZONTAL REPEAT**

**4.50 in (11.43 cm)**

**CONTENT**

**Base: 100% Cotton,  
Embroidery: 100%  
Polyester**

**BACKING**

**PRODUCT NUMBER**

**4668702**

**COUNTRY**

**China**

**CLEANING CODES**

**S**

**ADDITIONAL PRODUCT NOTES**

**Ca Tb 117-2013, Exclusive Pattern, Embroidered Textiles Are Not, Guaranteed For Precise Color, Matching And Colorfastness., Color Placement Of Embroidery, May Vary. All Measurements, Quoted For Repeats Are, Approximate.**