

Fabric Product Details

PATTERN **04731**  
COLOR **Aqua**

BRAND

**Trend**

APPLICATION

**Fabric**

USES

**Upholstery**

CATEGORIES

**Outdoor, Easy To Clean,  
Wovens, Eco /  
Environment Plus**

BOOK

**Vern Yip Insideout**

COLORS

**Aqua / Teal**

DESIGN TYPES

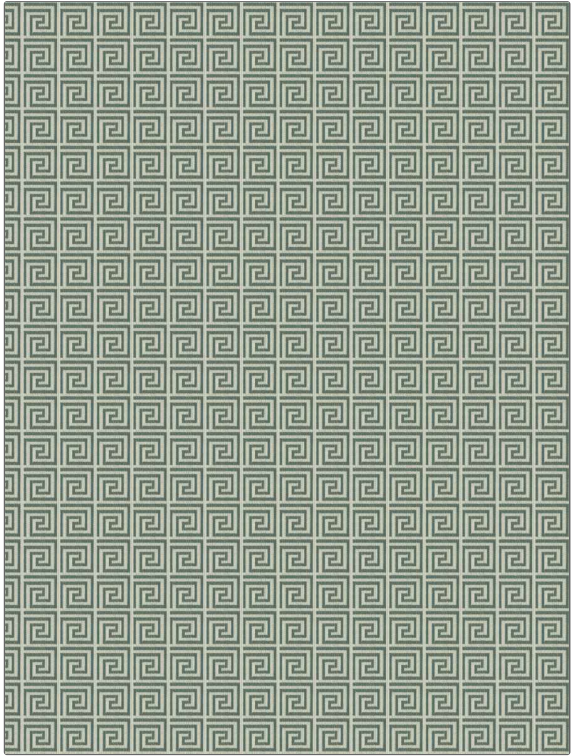
**Geometric, Small Scale  
Woven, Contemporary /  
Modern**

SCALE

**Small**

DIRECTION SHOWN

**Railroaded**



WIDTH

**56.00 in (142.24 cm)**

FINISH

**Easy To Clean Finish**

VERTICAL REPEAT

**1.75 in (4.44 cm)**

HORIZONTAL REPEAT

**1.75 in (4.44 cm)**

CONTENT

**65% Polyester, 35% Olefin**

BACKING

**100% Acrylic Backing**

FIRE CODES

**UFAC Class I**

DOUBLE RUBS

**Exceeds 63,000 Double  
Rubs (Wyzenbeek Method)**

PRODUCT NUMBER

**0857101**

DATE BOOKED

**02/2020**

COUNTRY

**USA**

CLEANING CODES

**WS**

ADDITIONAL PRODUCT NOTES

**Pfas-Free, Easy To Clean Finish, Indoor / Outdoor, 1,200 Hours Light Fastness, Ca Tb 117-2013, Anti-Bacterial / Anti-Microbial, Insideout Performance Fabrics, 100% Acrylic Backing, Shown Railroaded, Exclusive Pattern**