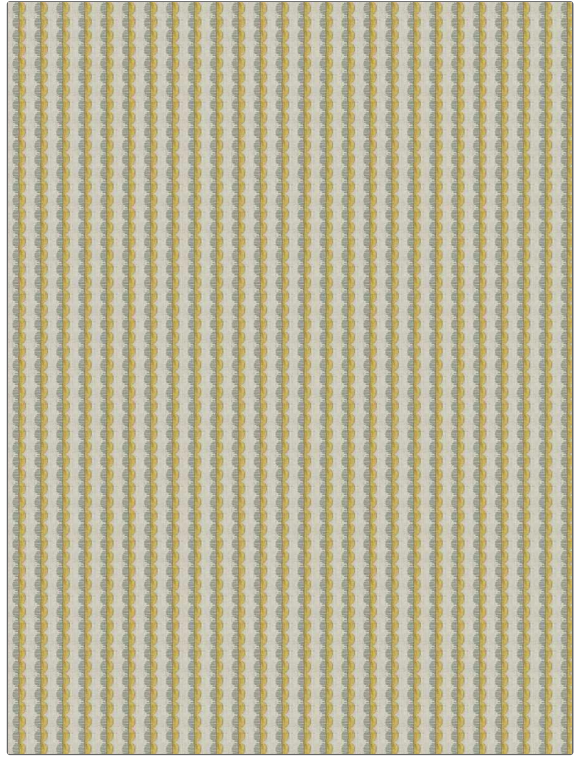


Fabric Product Details

| | |
|--|-------------------------------|
| PATTERN | 05266 |
| COLOR | Lime |
| BRAND | APPLICATION |
| Trend | Fabric |
| USES | CATEGORIES |
| Bedding, Drapery | Crewels / Embroideries |
| BOOK | COLORS |
| Chromatics Vol. II (4 Books) Rose / Wheat | Gold, Light Green |
| DESIGN TYPES | SCALE |
| Stripes, Contemporary / Modern | Small |
| DIRECTION SHOWN | |
| Up the Bolt | |



| | | | |
|-----------------------------|--------------------------|--------------------------|---|
| WIDTH | VERTICAL REPEAT | HORIZONTAL REPEAT | CONTENT |
| 51.00 in (129.54 cm) | 1.87 in (4.75 cm) | 3.00 in (7.62 cm) | Embroidery: 83% Viscose, 17% Cotton, Base: 83% Polyester, 11% Cotton, 6% Linen |
| BACKING | PRODUCT NUMBER | DATE BOOKED | COUNTRY |
| | 9523604 | 04/2023 | India |
| CLEANING CODES | | | |
| S | | | |

ADDITIONAL PRODUCT NOTES

Embroidered Textiles Are Not, Guaranteed For Precise Color, Matching And Colorfastness., Color Placement Of Embroidery, May Vary. All Measurements, Quoted For Repeats Are, Approximate.