

# Fabric Product Details

**PATTERN** 04562  
**COLOR** Graphite

**BRAND**

**Trend**

**APPLICATION**

**Fabric**

**USES**

**Bedding, Drapery,  
 Multipurpose**

**CATEGORIES**

**Wovens**

**BOOK**

**Lifestyles By Color IX (4  
 Books) Sand / Storm**

**COLORS**

**Black, Grey**

**DESIGN TYPES**

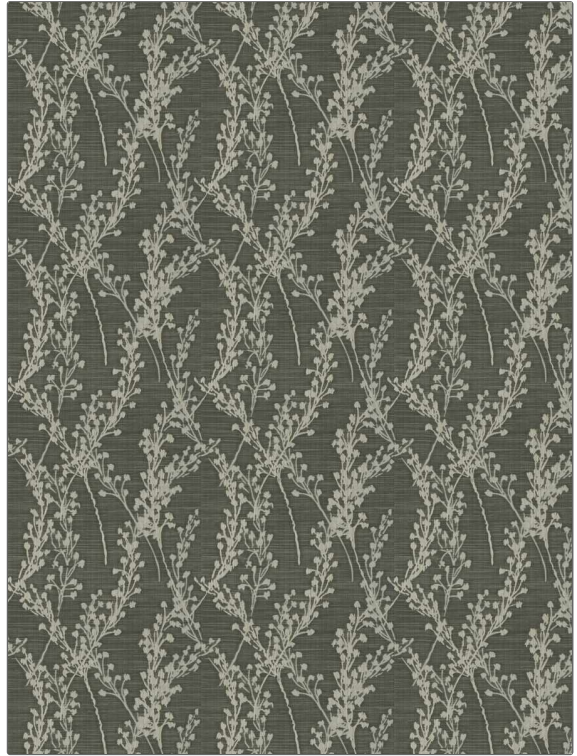
**Floral, Jacquard Pattern,  
 Leaves**

**SCALE**

**Medium**

**DIRECTION SHOWN**

**Up the Bolt**



**WIDTH**

**55.00 in (139.70 cm)**

**VERTICAL REPEAT**

**9.25 in (23.50 cm)**

**HORIZONTAL REPEAT**

**9.25 in (23.50 cm)**

**CONTENT**

**74% Polyester, 26%  
 Viscose Yarn**

**BACKING**

**FIRE CODES**

**UFAC Class I / NFPA 260**

**DOUBLE RUBS**

**Exceeds 15,000 Double  
 Rubs (Wyzenbeek Method)**

**PRODUCT NUMBER**

**9750102**

**DATE BOOKED**

**02/2019**

**COUNTRY**

**India**

**CLEANING CODES**

**S**

**ADDITIONAL PRODUCT NOTES**

**Passes 20,000 Martindale Tst, Ca Tb 117-2013, Exclusive Pattern**