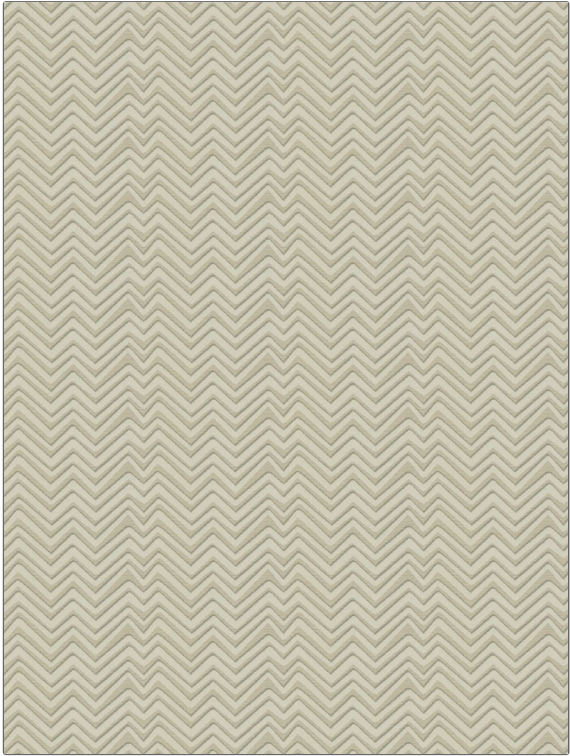


Fabric Product Details

PATTERN Amalfi Chevron
COLOR Limestone

BRAND	APPLICATION
Vervain	Fabric
USES	CATEGORIES
Bedding, Drapery, Multipurpose, Upholstery	Silk, Wovens
BOOK	COLORS
Tesori	Grey
DESIGN TYPES	SCALE
Chevron	Medium
RAILROADED	
Not Railroaded	



WIDTH	VERTICAL REPEAT	HORIZONTAL REPEAT	CONTENT
54.00 in (137.16 cm)	5.20 in (13.21 cm)	6.70 in (17.02 cm)	73% Cotton, 27% Polyester
BACKING	FIRE CODES	DOUBLE RUBS	PRODUCT NUMBER
	UFAC Class I / NFPA 260	Exceeds 51,000 Double Rubs (Wyzenbeek Method)	9688701
DATE BOOKED	COUNTRY	CLEANING CODES	
09/2018	India	S	

ADDITIONAL PRODUCT NOTES
 Ca Tb 117-2013, Exclusive Pattern